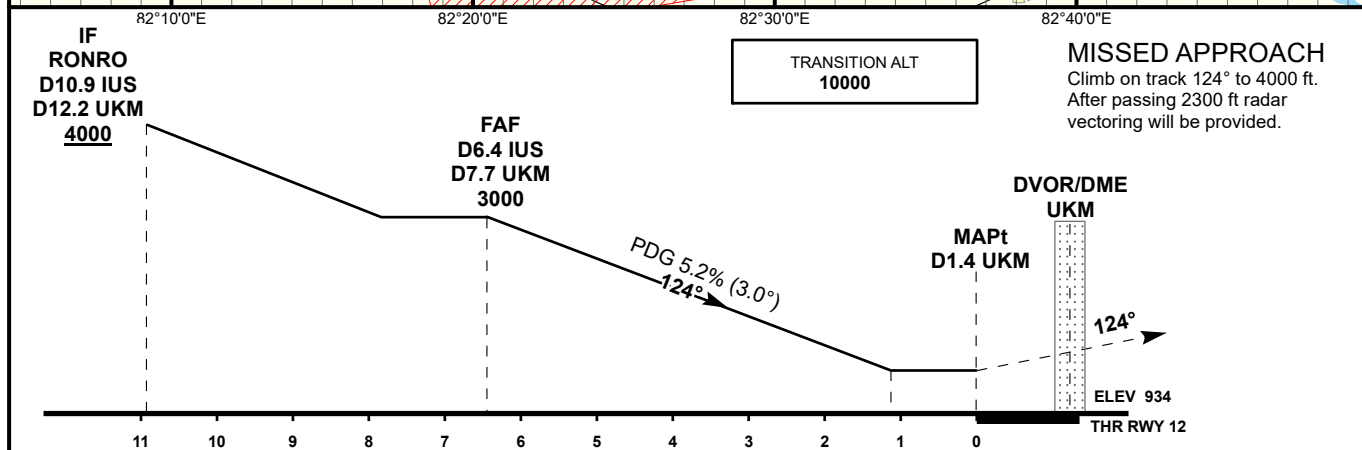
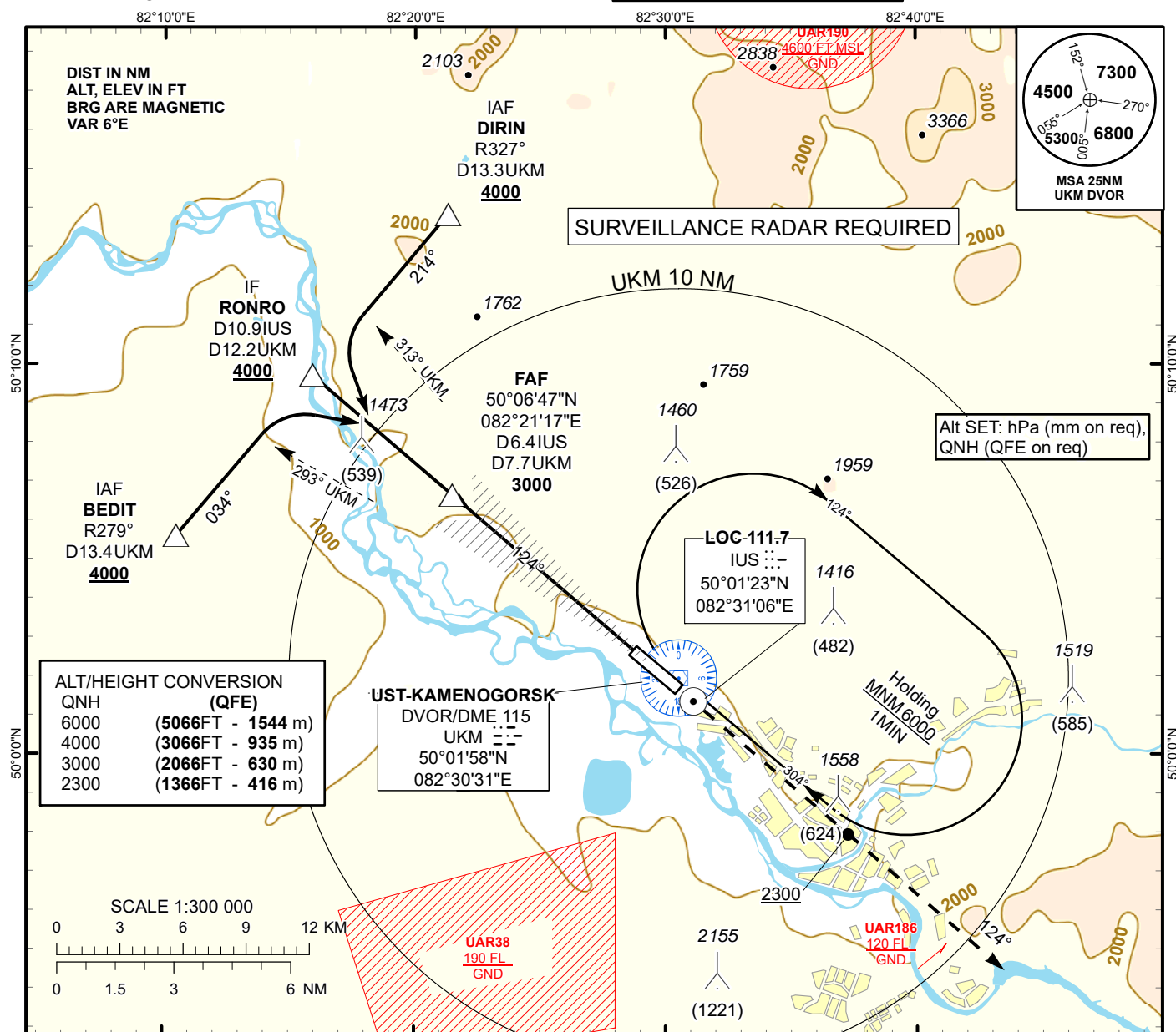


INSTRUMENT
APPROACH
CHART - ICAOAERODROME ELEV **942FT**
HEIGHTS RELATED TO
THR RWY12 - ELEV **934FT**UST-KAMENOGORSK TOWER 130.1
UST-KAMENOGORSK ATIS (EN) 124.2
UST-KAMENOGORSK ATIS (RU) 127.7UST-KAMENOGORSK
LOC/DME
RWY 12

Aircraft Category		A	B	C	D	DIST to THR DME IUS	NM	6.4	6	5	4	3	2	1
Straight-in Approach OCA/H	LLZ (GP INOP)	1320(390)	1320(390)	1320(390)	1320(390)	DME UKM	NM	7.7	7.3	6.3	5.3	4.3	3.3	2.3
						ALTITUDE	FT	3000	2880	2560	2250	1930	1610	1320
						HEIGHT	FT	(2066)	(1946)	(1626)	(1316)	(996)	(676)	(386)
DME IUS ZERO RANGED TO THR RWY 12														
Aerodrome Operating Minima DH ft x RVR (CMV)	LLZ (GP INOP)					WARNING								
						1. Priority landing is performed according to pattern. 2. Heavy turbulence and wind shear may arise on final.								
						GS	Kt	80	100	120	140	160	180	
						Desc. Rate (5.2%)	ft/min	420	530	640	740	850	960	

CHANGE: New chart.

UST-KAMENOGORSK
LOC/DME

AERONAUTICAL DATA TABULATION

LOC/DME approach to RWY12 from BEDIT, RONRO, DIRIN	
Fix/point	Coordinates
UKM DVOR/DME	50° 01' 58.0"N 082° 30' 31.1"E
(FAF) D6.4 IUS, D7.7 UKM	50° 06' 46.8"N 082° 21' 17.2"E
RONRO (IF) D10.9 IUS, D12.2 UKM	50° 09' 43.7"N 082° 15' 54.5"E
BEDIT (IAF) R279°, D13.4 UKM	50° 05' 36.7"N 082° 10' 28.9"E
DIRIN (IAF) R327°, D13.3 UKM	50° 13' 51.6"N 082° 21' 18.9"E
THR RWY 12	50° 02' 38.22"N 082° 28' 49.30"E
IUS LOC	50° 01' 22.8"N 082° 31' 05.8"E
Final approach descent angle is 3°	